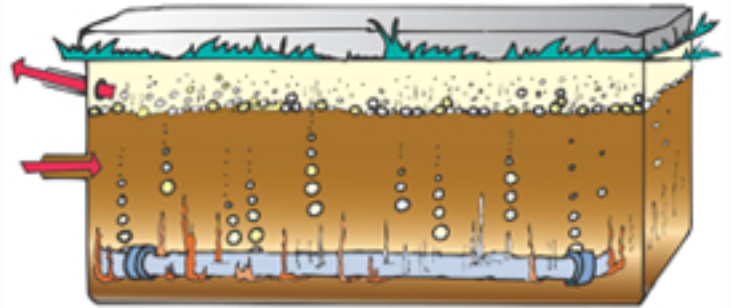


HOW ENERGY HAPPENS

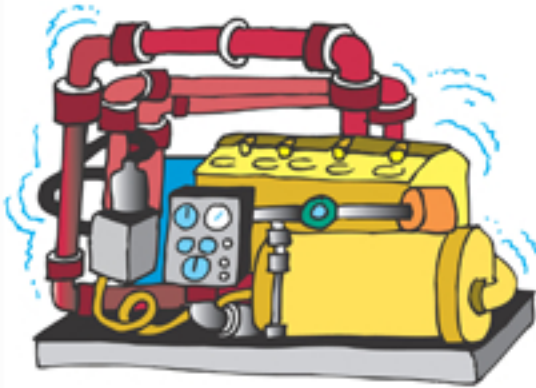


One cow can poop over 30 gallons a day. 1,000 cows produce about 30,000 gallons of manure. All that poop can be turned into some serious profit for farmers generating Cow Power. The manure is fed into an anaerobic digester.

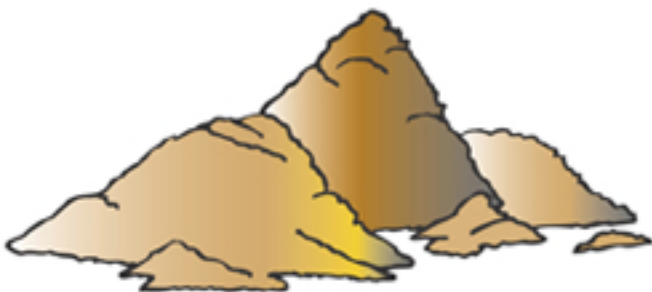
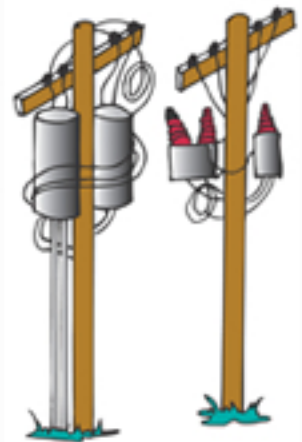
The digester is built to hold 21 days of farm waste at roughly 100°. Bacteria convert the waste into various products, one of which is methane gas. Gas produced by the bacteria builds up pressure in the concrete vessel, and a pipe delivers the biogas to a modified natural gas engine.



The biogas fuels the engine, which in turn spins an electric generator to create electricity. Waste heat from the engine is used to keep the digester warm, and offsets fuel purchases on the farm.



One cow's waste can produce enough electricity to light two 100-watt light bulbs 24 hours a day. The energy is fed onto the CVPS electrical system for distribution to customers.



Digested manure is processed through a mechanical separator. The odorless solids can be used to replace sawdust or sand as bedding for the animals. Solids not used for bedding may be further processed and sold to the public.